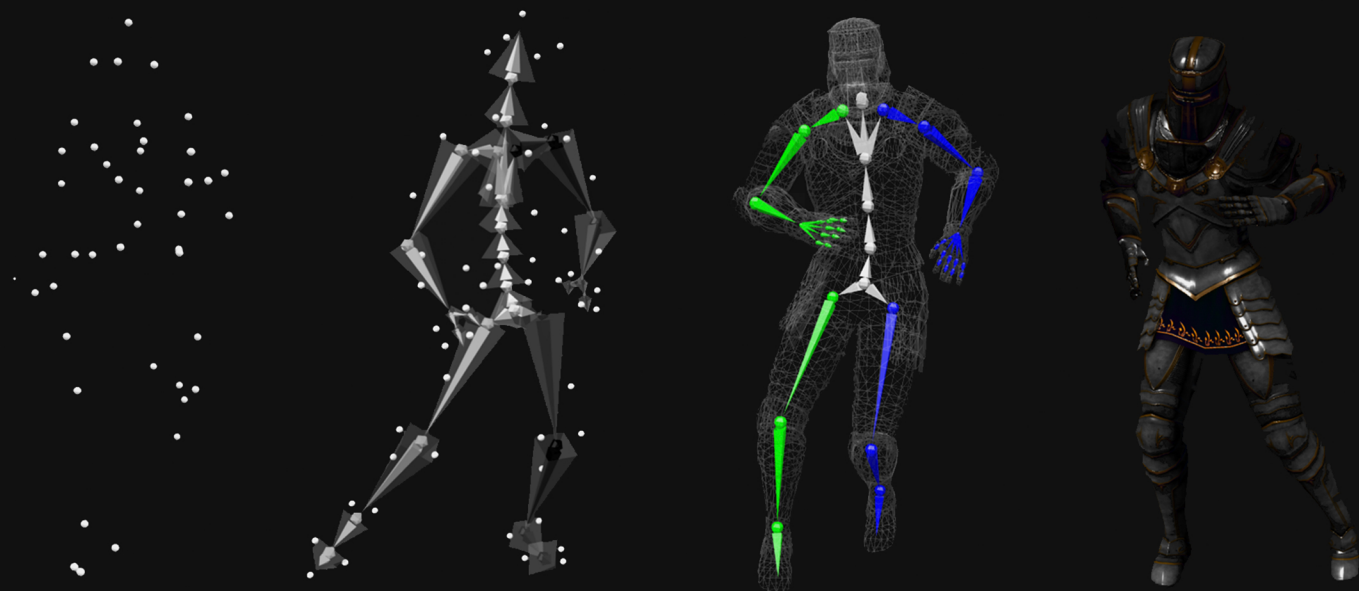




MOVESHelf

FOR CHARACTER ANIMATION

All your character animation and motion capture data in one place.



COLLABORATE WITH EASE.

All your character animation data in one place, accessible for the whole team. Share 3D animated characters with a link. Collaborate directly in your browser, in 3D, on any device.



HOW MOVESHelf HELPS YOU...



IMPORT

Import 3D characters and animations in one place. FBX and gITF are our friends.

Import files from any performance capture systems, optical or inertial based, along with witness cam videos. Synced and TimeCode.



STORE

We do our part to protect your IP - our world class cloud storage is MPAA compliant.

- 100% anonymized and AES-256 encrypted.
- Safely backed up in multi-regional redundant data centers.
- Accessible through secure authentication under your full control.
- ISO 27001, ISO 27017, ISO 27018, HIPAA, CSA STAR, GDPR.



ORGANIZE

Effortlessly organize all your data in one place. Keep everything tidy using projects and folders with fine-grained access control.

Directly import entire folder trees and dataset, in one go.

Search between thousands of records in large datasets in milliseconds.



COLLABORATE

Efficiently collaborate with remote teams from anywhere in the world. Collaborate with the simplicity of a link:

- Collect feedback and reviews, directly in a browser.
- You see what they see. No need to worry about software compatibility or licenses.
- Protect your IP using 3D web-view instead of sending asset files without access control.



INTEGRATE

Integrate with animation and game development tools and source control.

API access with open source interfaces to Unity, python, nodejs and more.

Unity, Unreal Engine, Maya and Perforce



SHARE

Be part of our community.

Get access to thousands of animations shared under creative common; Share a selection of your work with full control over the terms of use Showcase your portfolio; Embed our flexible, beautiful 3D player on any website, just like you can with video.



BUILT FOR CHARACTER ANIMATORS AND MOTION CAPTURE PROFESSIONALS

BASIC

Built for the community and for mocap data and animation reviewers invited to join private spaces.

- Organise motion data
- Access anywhere
- Community support

PROFESSIONAL

The best way for mocap technicians, animators and professionals to get started on Moveshelf.

- Private, secure spaces
- 100 GB storage
- Business class support

TEAM

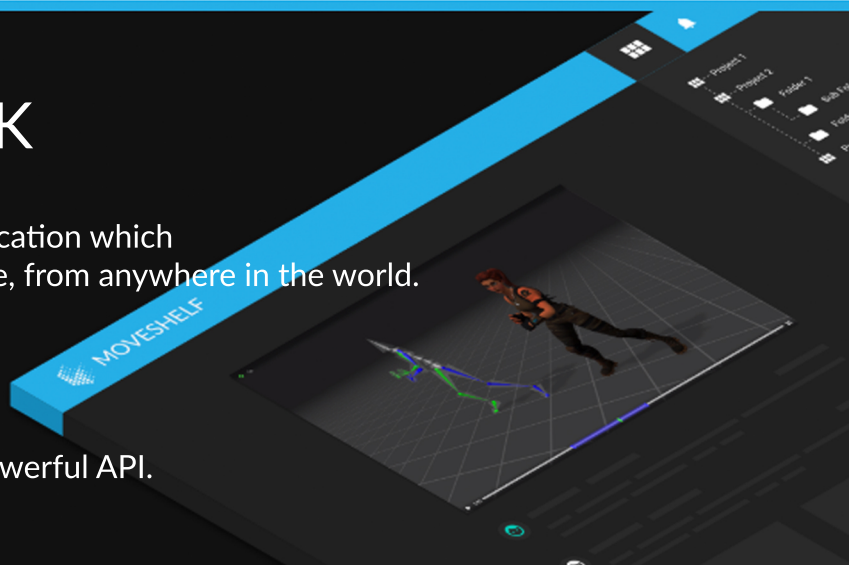
A must have for professional teams working with 3D character animation or motion capture data.

- Separate payment account
- 5 seats included
- Priority support

HOW DOES IT WORK

Moveshelf is a secure and easy to use application which works directly in the browser, on any device, from anywhere in the world. Moveshelf key components are:

- User friendly Web UI
- Beautiful 3D web player.
- Scalable, secure cloud infrastructure. Powerful API.



LEARN MORE ABOUT MOVESHelf PLANS

BASIC

- ✓ Organise motion capture data from different optical or inertial based mocap systems in one place.
- ✓ Reviewer role access when invited to private spaces.
- ✓ Full support for .FBX, .BVH, .glTF, .GLB, .TRC and many more file formats.
- ✓ Beautiful 3D web player with VR support built in.
- ✓ Unlimited public spaces to show off your work.
- ✓ Basic 3D web player customization.
- ✓ Programmatic access through public API.
- ✓ Support by community, forum, Slack.

PROFESSIONAL

- ✓ + all the features from Basic
- ✓ Private project spaces with MPPA compliant, encrypted, file storage with automatic backups.
- ✓ Unlimited invitations to reviewers to private spaces.
- ✓ Add media tracks (audio + video) with time code support.
- ✓ No limit on the length of motion clips.
- ✓ Multi-take, multi-actor support.
- ✓ 100 GB motion data secure storage.
- ✓ Programmatic access through private API.
- ✓ 48h email support. Access to private forums.

TEAM

- ✓ + all the features from Professional
- ✓ Separate payment account and role management.
- ✓ 5 seats included.
- ✓ Extended raw file storage.
- ✓ Advanced 3D web player customization and styling.
- ✓ 1TB scalable file storage.
- ✓ Priority support.



<https://moveshelf.com>

